



Hitler: Munich to Arras

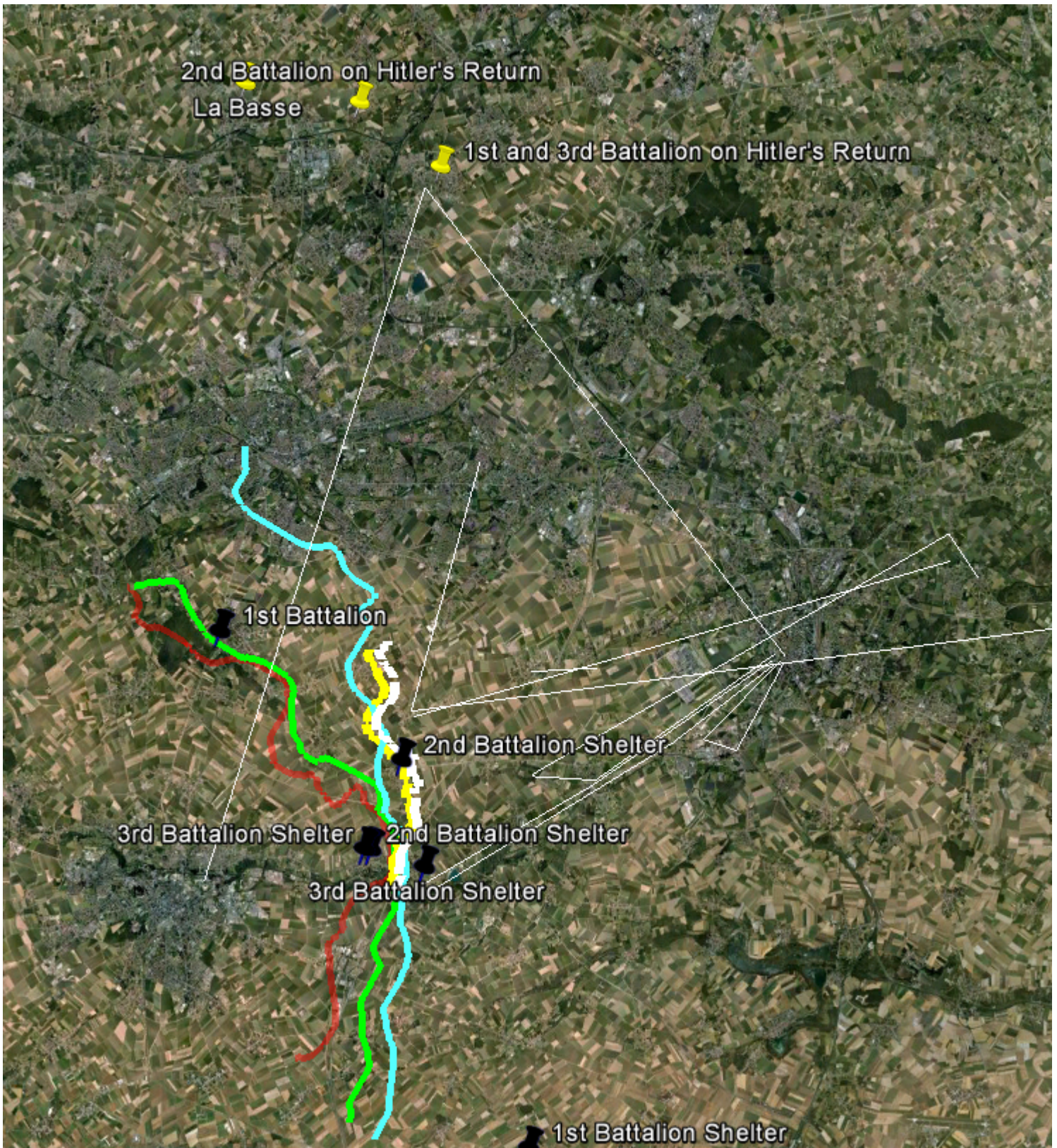
by Pat Lockley

2012-05-01 13:27:54

From a Munich hospital in December 1916 future dictator Adolf Hitler sent a postcard to his comrade Karl Lanzhammer, expressing his desire to go back to the front line. Nursing a leg wound from the Battle of the Somme he was keen to voluntarily return to his regiment, the [Königlich Bayerisches Reserve-Infanterie-Regiment Nr. 16](#). The postcard reads:

"Dear Lanzhammer, I am now in Munich at the Ersatz Btl (battalion). Currently I am under dental treatment. By the way I will report voluntarily for the field immediately. Kind regards A. Hitler."

His zeal to return to War and his communications with his fellow regiment members show his attachment to the army, a stark comparison to the non-communication he had with his family and pre-war acquaintances. Returning to France in March 1917, he rejoined his regiment who fought in the Battle of Arras. This map shows the movements of Hitler and his regiment during that time.



Hitler's role was a "runner" - a person taking messages - and it seems uncertain as to whether this is in the trenches, or in the headquarters (located at La Bassee - a long way from the front).

[Download the KML Layer](#) and play it in [Google Earth](#).

[See the map in Google Maps](#).

You can access the data via [our Github account](#) as well.

Licensed as Creative Commons CC-BY-NC-SA

[Original version](#)